



ISO  
ISO 9001

← Entry

CUL  
TU  
RE

@ DLF Saket, Delhi

Entrance Matting Systems

The place where one's eyes and feet stop!!

**Yes, the Entrance**

Wimat enhances the looks of the entrance of a building to catch one's attention and has the potential to keep the interiors dust-free.

Wimat is in continuous pursuit of developing long-lasting entrance solutions.





Premium Entrance Mat System

Wilmat offers customized Recessed and Exposed Mat Solutions. The Entrance Mat is specifically designed to remove shoe-borne dust and collect it beneath efficiently, thus keeping the interiors clean and healthy. Easy to roll up to remove dust in the frame, Wilmat is a premium mat which gives distinguish appearance to an entrance with eye-catching colors and design. . Our mats are long-lasting, eco-friendly and cost-effective.

### 1. Environment

Keeps Indoor Environment Clean by Removing Dust

### 2. Safety

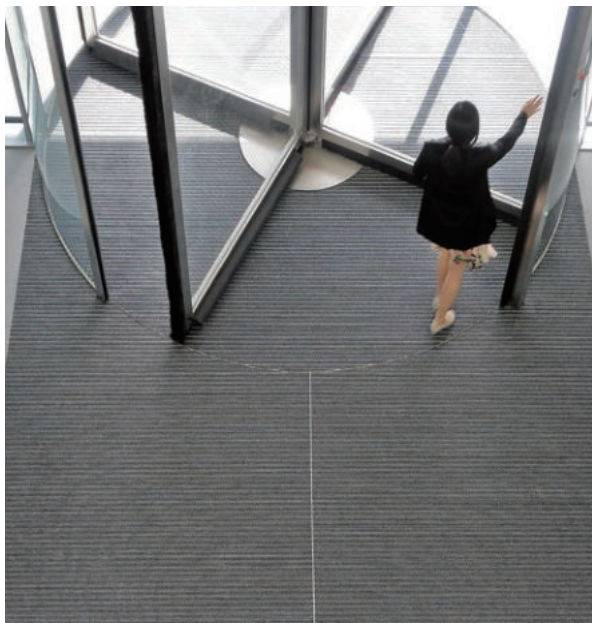
Effectively Checks Trip, skid and slide accidents

### 3. Aesthetic

Exclusive Colors, Designs to weave patterns to amicably match the Exteriors/Interiors Décor

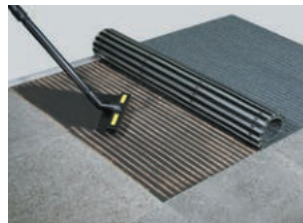
### 4. Economy

Easy Maintenance, Quick Repairability with long life , saves money



Hyundai Training Institute

Wilmat gives magnificent looks to the interior/exterior of the entrances and can be easily integrated with any type of flooring material such as marble or ceramic tiles, etc. Wilmat when soaked in rains or stepped with wet shoes, naturally drain out the water to maintain its looks and usability.



**Feature :** Wilmat can be rolled like a carpet that makes it easy to clean and maintain., Wilmat, a Korean product now available locally, with prompt after-sales service.



**ANAB** (ANSI National Accreditation Board) is a US-based international accreditation agency that notifies certification for confidence in the competency and credibility of a product. Wilmat stands certified by ANAB for qualities encompassing durability and ecological effectiveness. Wilmat has also received certifications from **IAF** and **TRA** high-lighting that the company's quality management system meets the requirement of KS Q ISO 9001:2015. These agencies are concerned with sustainable green building and energy efficiency programs. An efficient entrance matting system contributes to building sustainability through effectiveness & long life. These certifications validate the competence of a manufacturer and are intended to increase a consumer's confidence in high quality of the product.

## • ENVIRONMENT

According to a research, 80% of dust which comes indoor is shoe-borne. Wilmat is designed to remove dust particles efficiently, thus keeping the indoor environment clean and healthy.

Many public institutions, malls, hotels, hospitals, assembly plants, entrance mats are often improper, and public/ students are exposed to respiratory diseases caused by pollutants/ sand particles present in the dust.

Wilmat is eco-friendly as constituted of recyclable aluminum profiles and carpet material

## • SAFETY

Quite often entrances of large buildings have stairs. To make these stairs disabled-friendly, slopes are made but these are often steep which result in accidents. Steps/ slopes using Wilmat provide safe traction.

Wilmat is a non-slip mat and can prevent accidents that can happen due to tripping or slippage.

Currently used entrance mats get frayed at edges that often result in trip and fall accidents which is a leading cause of intentional injuries.



## • AESTHETIC IMPRESSION

Entrance mats are crucial as these leave a lasting impression. The entrance is the first place that greets the eyes of a visitor who draws a mental picture of facilities they expect from such a building.

Wimat make the entrance looks luxurious, clean and attractive as it is available in a range of colors and pattern.

Wimat gives a distinguished appearance to the entrance.

Wimat can be used in inside, intermediate and out-side areas of an entrance.

## • ECONOMY

Wimat made of high durable EPDM rubber and equally sturdy carpet material, handles heavy foot-fall, collects dust effectively from the shoes to keep the interiors of a building clean. The residual dust present in the mat can be easily removed as it can be rolled over with comfort. The cleaning and maintenance of Wimat are considerably easy and less expensive.

In comparison to other brands, Wimat is Weather-proof thus provides longer service without getting faded, chipped or cracked. With a little care, Wimat can be maintained as new.

Wimat is constituted of cassettes of carpet, damaged part if any, can be easily replaced.

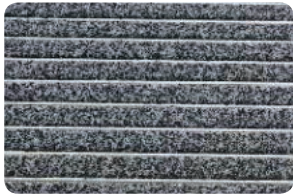
Wimat is a cost-effective solution as reduces cleaning efforts and costs.



## • Types of Wilmat Entrance Matting System

Various colors and designs can be harmonized with any entrance to create a magnificent pattern.

### • GEN 0207



Model	R - 16
Thickness	16 mm
Use	Recessed, Surface
Color	Gray
Material	Aluminium Alloy Base + Premium Gray Nylon Carpet
Feature	The gray carpet is made of 100% Nylon synthetic fiber which is considered as the most durable and long-lasting carpeting material. The crush-resistant carpet is inherently heat, fire and water-proof. The mat helps prevent slip and trip accidents. Ideal for deploying in exterior as well as interior areas.

### • MAT 1014



Model	R - 16
Thickness	16 mm
Use	Recessed, Surface
Color	Gray & Black
Material	Aluminium Alloy Base + Gray Carpet + EPDM Black Chequered Rubber
Feature	An exclusive combination of gray carpet with highly durable EPDM elastomer, a high-density rubber which is weather, temperature, and stain-resistant. Both carpet and rubber have a long life-cycle. The mat prevents slip and trip accidents. Designed to handle heavy foot-fall, the mat is recommended for exterior use.

### • LUK 0905



Model	R - 16
Thickness	16 mm
Use	Recessed, Surface
Color	Carpets
Material	Aluminium alloy base + Carpets + EPDM
Feature	Carpets made with ribbed top-surface is ideal for removing shoe-borne dust. The carpet is highly durable. Carpets are available in many vibrant colors and is an exposition of beauty and strength. It can handle heavy foot-fall witnessed by Malls, Hospitals Schools, etc. Recommended for use in interior areas.

## Wilmat Calypso Carpet Specification

Wilma calypso is constructed from 100% polypropylene yarn and is available in a choice of four colours.

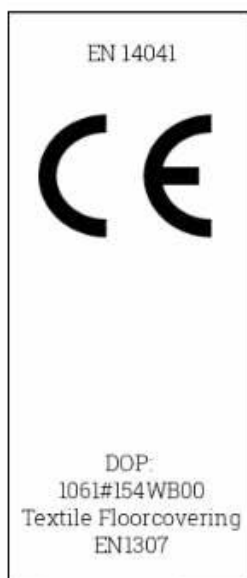
Wilmat calypso is design for stand-alone matting in entrances and access points.

### Floorsymbols

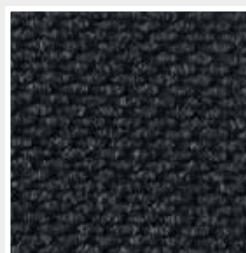


Warranties:	Sheet
Wear	1 Years
Manufacturing process:	Needlefelt
Surface aspect	Dessin
Backing	WB
Pile yarn composition	100% PP
Pile weight	1150 g/m <sup>2</sup>
Total weight	2130 g/m <sup>2</sup>
Pile height	8,5 mm

Flammability	
EN 13501-1	Class Efl



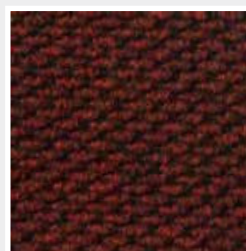
Gray



Black



Gray



Red



Blue

The products have been produced and tested according procedures agreed in our quality system (according ISO 9001). The tests have been carried out according to the prescribed standards.

## • Functionality & Performance Test Verified

### • Collection method

Install mat size of 2mx2m at the entrance of a shopping mall in New Delhi for a week

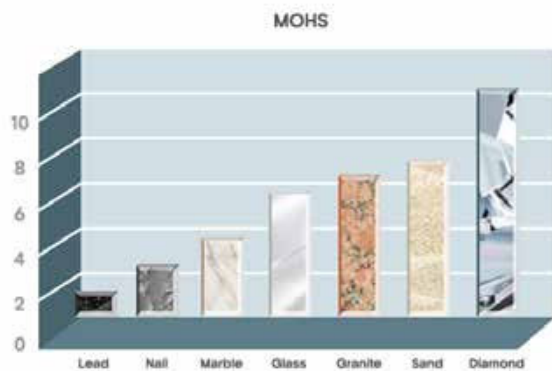
2.2 Kg Dust collected in 7 days at shopping mall entrance



### Collected Dust Testing Report: Sand Ratio in Dust

S. No.	Test Name	Result	Test Method
1	Sand Content, % by mass	60.1	IS: - 2720 guidelines

### • Analysis 1: Hardness Comparison



According to MOHS hardness graph, sand is harder than granite & marble, most commonly used flooring materials in India. The dust which contains sand, when enters interior of a building through shoes, erodes the floor irreversibly.

### • Analysis 2: Maintenance Cost

According to ISSA (International Sanitary Supply Association) Report, it costs about Rs 60,000 to remove 1kg of dust from a building. As per a study, a building that does not have an efficient mat system, 56% of the floor wax remains at the 1 sq.mtr of entrance area after visit by 1500 people.



### • Conclusion

- Dust Takes away the shine from costly marble and ceramic flooring.
- Wilmat saves maintenance cost by collecting more dust than other products and easy to maintain.
- Wilmat is an excellent solution to keep indoor environment clean & healthy.
- Wilmat is long-lasting product, which comes with prompt after-sales services.

## • INSTALLATION

### • 1 RECESSED WILMAT



**1. Marking lines**  
Before Wilmat installation, check the place and size, and draw line.



**2. Cutting**  
Cut floor by cutting machine along the line.



**3. Hacking**  
Remove the floor and dig till 50mm depth.



**4. Fixing the frame**  
Before concrete mortar is put in place, settle and fix the frame to meet the height of finishing materials.



**5. Plastering**  
Form concrete mortar and make it flat.

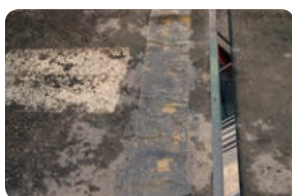


**6. Curing**  
After pouring concrete mortar, cure the concrete enough.  
(If the level is wrong, level off using with self-levelling mortar or urethane resin.)



**7. Installation Wilmat**  
After dried cement mortar, install the mat in the frame. The installation is finished.

### • 2 SURFACE WILMAT



**1. Select the place**  
Before installation of Wilmat, select the place, level it with mortar, let it dry, and settle the frame.



**2. Fix the frame**  
Using screw anchor, fix the frame on the floor.

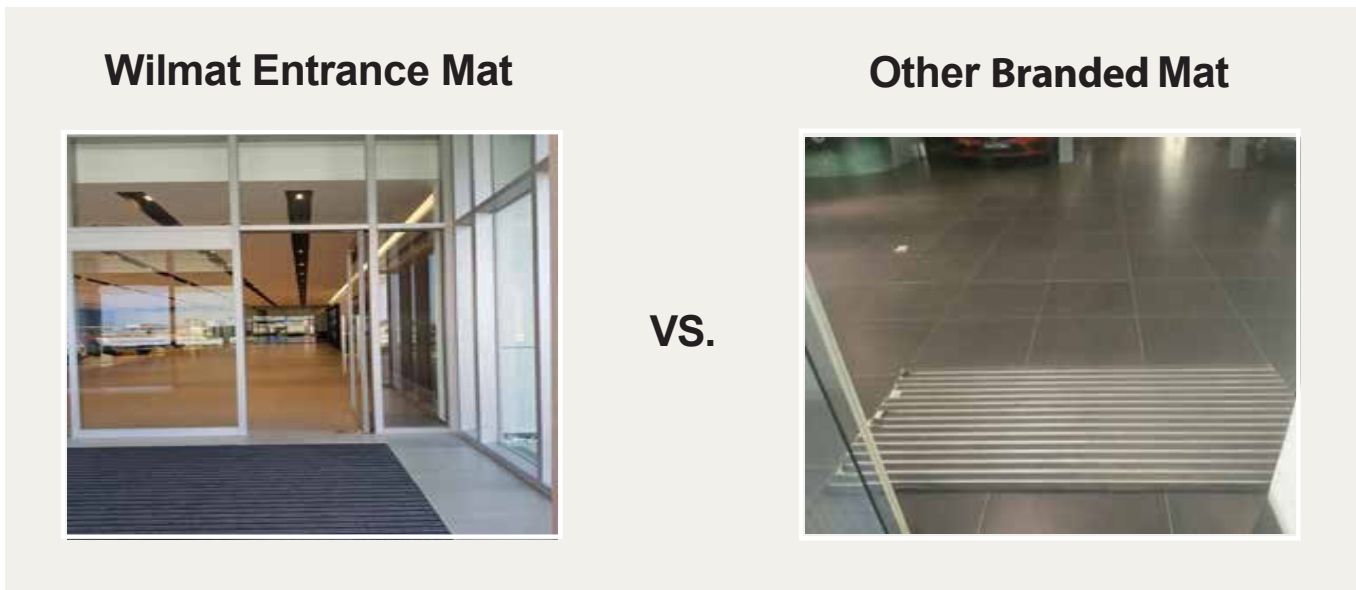








**3. Install Wilmat**  
Install the mat in the frame.

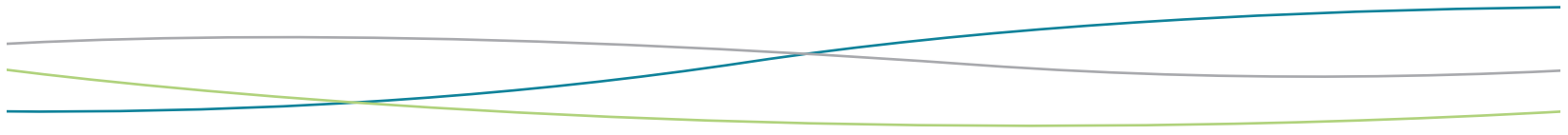


**4. Finish installation**  
Check the mat, clean the site.

• Comparison of Wilmat Entrance Mat vs Other Entrance Mat



Removes Dirt / Sand particles from shoes & discreetly deposited it underneath the mat	 DIRT	Dirt remains at the surface of the mat and disperse
Prevents Slip & Trip safety accidents as it absorbs water from shoes and drains it out.	 SLIP AND FALLS	Carpet becomes wet and crumble which results in trip / slip accidents
Mat removes the dust efficiently minimizing its entry to the building	 FOOT TRACKING	Dust gets spilled over as it settles on the surface
Dependable & long lasting mat that performs for years, excellent crush resistance	 LIFE CYCLE COSTS	Gets easily damaged and frayed, needs frequent replacements
Available in various sizes, colors & patterns Enhances and beautifies the aesthetics of the entrance to attract attention	 APPEARANCE	Available in various color schemes but gets dirty, stained and soiled very easily Entrances of even good buildings appear like an eye soar, leaves a negative impression
Requires minimum cleaning and periodic maintenance The mat comes with prompt after-sales support	 MAINTENANCE	Wears out faster and needs frequent replacements After-sales services not available



• Cases - India

## Current Scenario of Foot Mats being used at Building Entrances



1. Foil Mats are most commonly used mats in India. These mats are very heavy & difficult to maintain. These mat do not collect dust but spread it. These do not offer a durable solution to a building entrance.



2. Heavy-duty Entrance Mats are often installed at Buildings with heavy footfall, face numerous, maintenance difficulties. The dust gets filled inside the gaps and instead of being contained, starts spreading inside the building.



3. Other Branded Mats with 10mm thick Aluminium base can be easily wrapped due to heavy pedestrian traffic. These mats are also very difficult to clean and maintain.



4. Marble joints at places get broken and scratched due to sand in the dust. Sand contains silica & quartz which have abrasive properties that stain expensive flooring to make it appear dull.



5. Dust gets deposited on AC grills which makes those dark and ugly. Dust is very harmful to sophisticated electronic equipment.

Appropriate entrance mat reduce maintenance time & cost with easy cleaning and management.

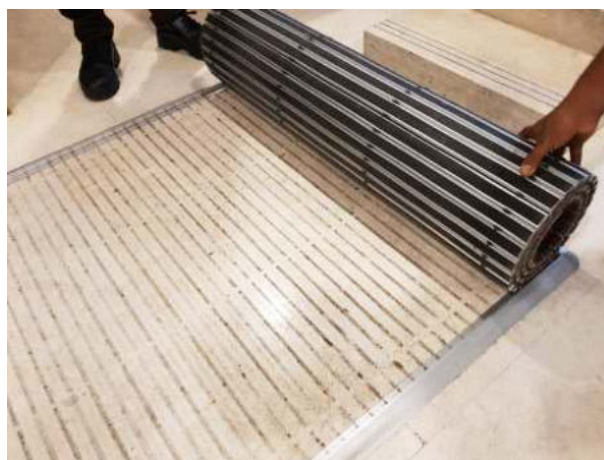
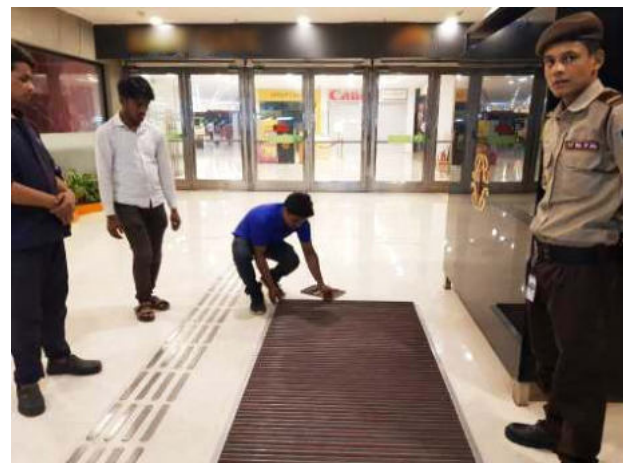
## • Cases - India

Premium buildings require premium entrance mats which not only help keep healthy environment but also enhance the looks of the building by keeping the interior spick & span. Silica & Quartz particles present in dust/debris often scratch the marble or ceramic tiles at the entrance which gets stained and discolored.

**Wilmat unfolds new prospects in the field of entrance mats.** The concept is an outcome of years of R&D undertaken by M/s Ecosys Co. of South Korea

Wilmat deployed in a famous mall entrance from the parking area which is considered relatively dust free, collected a considerable amount of dust. The pictures below are self explaining.

## Wilmat Installation at Shopping Mall's Parking Entrance



**1m x 2m wilmat collected a lot of fine dust even though people who come by car after walking over a local mat**

## • Cases - India

2mX2m Wilmat deployed at the main entrance on the ground floor of a mall, collected about 300g of dust just in a day. Dust collected was analyzed by an established laboratory in Okhla Phase 2. It contained 60% sand which is abrasive to cause scratches on the floor made of expensive marbles or ceramic tiles. Apart from the floor, dust also effects electronic equipment, AC ducts and grills, escalators and ruin these over a period.

## Wilmat Installation at Shopping Mall's Main Floor Entrance



Collection of a day  
(Traffic condition 50,000 entry/day)

2m x 2m wilmat collected more than 300g dust in a day even after people walk over a local mat

**Dust contains harmful substances to the human body and causes respiratory diseases.**

So by applying our Wilmat premium entrance mat solution, you can maintain a pleasant and clean indoor environment. Reduce maintenance cost & time with easy cleaning method. Retain optimal state of the mat by regular cleaning.

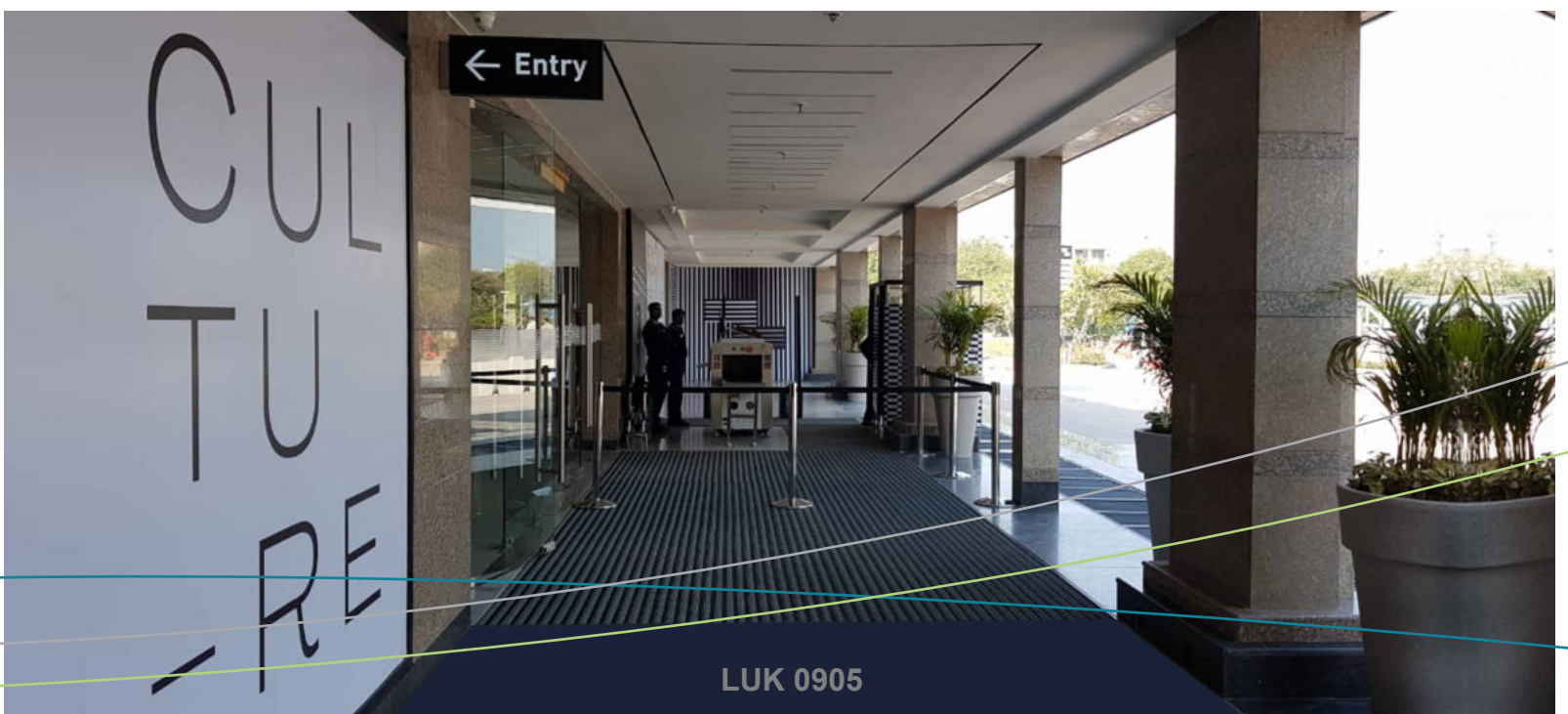


Collection of 30 days  
(Traffic condition 50,000 entry/day)

## Other Branded Mat dust collection

**Other Branded Mat** deployed on the building's main entrance (East Gate inside) at the Ground Floor, measuring 3425mmx1600mm, collected about 300gms of dust in 2 years.

• Cases - India

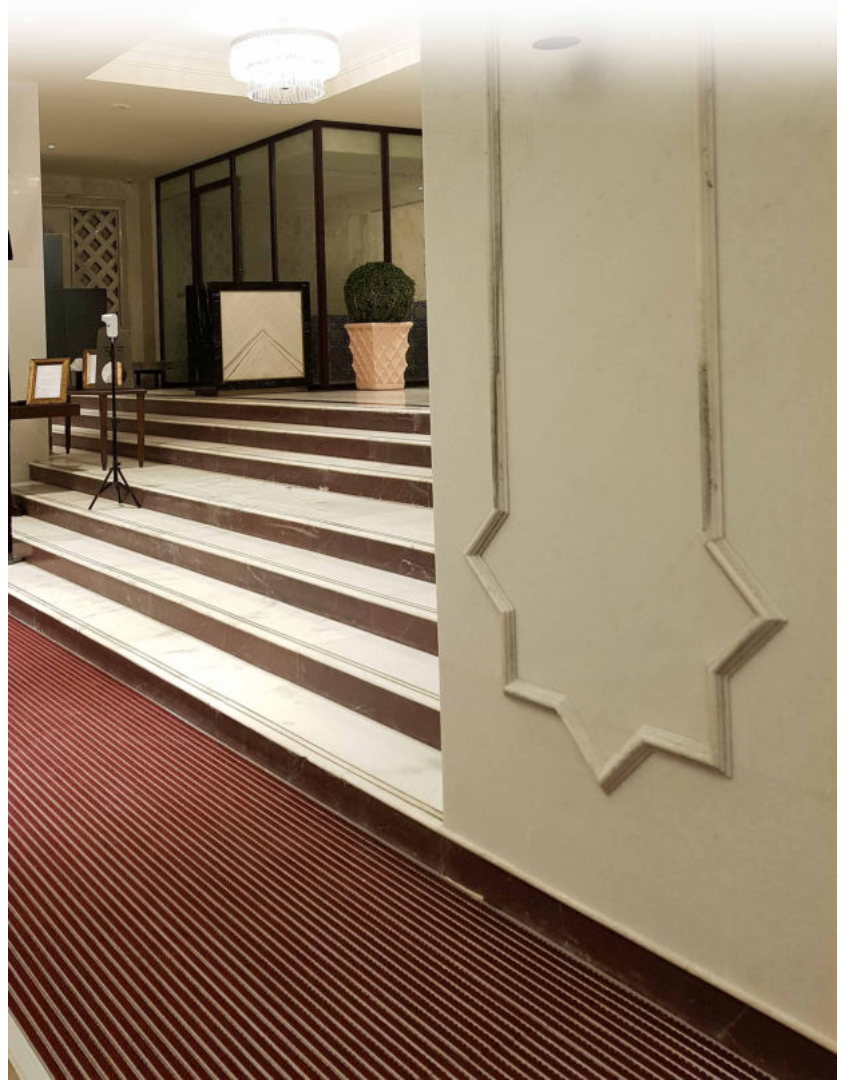


LUK 0905

• Cases - India



  
**TAJ**  
MAHAL  
NEW DELHI





Mall Entry

• Cases - India



TWO  
HORIZON  
CENTER



• Cases - India



KIA MOTORS



KIA Motors Showroom, Bangalore

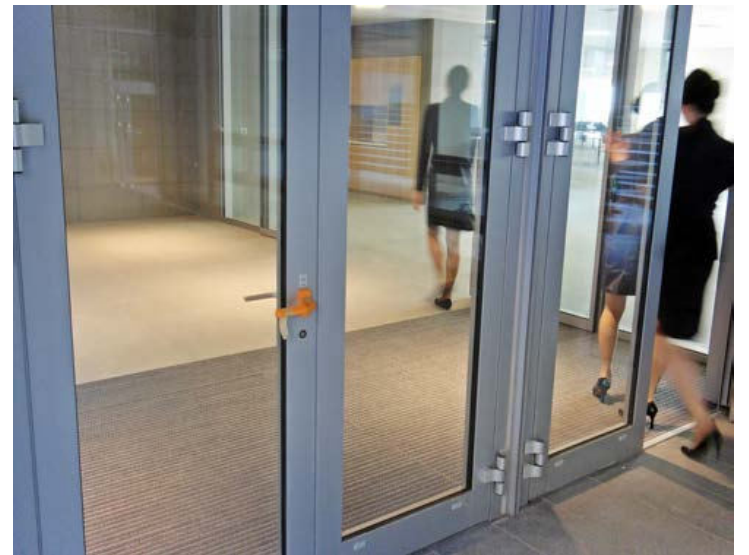
• Cases - Korea



Shopping Mall



University Hospital



Corporate Office



Corporate Office

*Shake the dust off your feet*

**MAT 1014**



Wilmats 24/1, Doddanekundi, Ferns City Road, Outer Ring Road, Marathahalli, Bangalore, Karnataka 560037  
For enquiries outside the India contact Wilmats on +91 98459 94897

**call: +91 98459 94897**

**[www.wilmats.in](http://www.wilmats.in)  
[nuri@wilmats.in](mailto:nuri@wilmats.in)**



All designs, images and illustrations contained within this catalogue remain the copyright of Wilmats Ltd.©  
All trademarks, product names and codes detailed within this catalogue are the property of Wilmats Ltd.

**MINSUB VENTURES PRIVATE LIMITED**